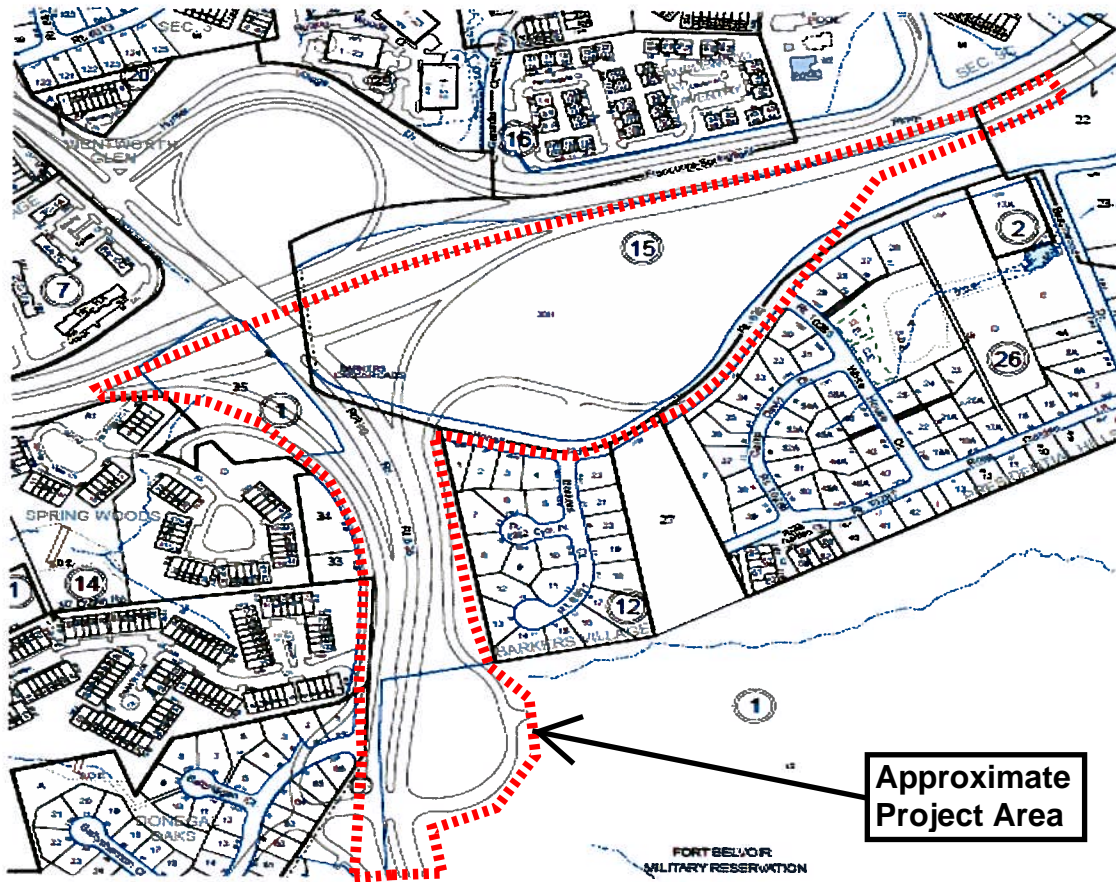
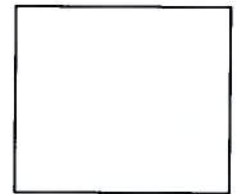


General Map of Fairfax County Parkway Phase III Area



Shirley Design/Build, LLC
45240 Business Court, Suite 100
Dulles, Virginia 20166



Fairfax County Parkway Extension, Phase III

from Hooes Road to Franconia-Springfield Parkway

PUBLIC INFORMATION MEETING

Thursday April 29, 2010

6:00pm – 8:00pm

West Springfield High School

6100 Rolling Road, Springfield, VA

Shirley Design/Build, LLC and Dewberry are under contract with the Federal Highway Administration – Eastern Federal Lands Highway Division to design and build Phase III of the Fairfax County Parkway Extension.

Please join us on April 29th to learn about and discuss design improvements and avoidance/minimization efforts proposed for the final phase of this vital roadway project.

Project Contacts:

Robert Morris
FHWA Eastern Federal Lands Highway Division
Project Manager
(703) 404-6302
Robert.Morris@dot.gov

Sid Siddiqui
Virginia Dept. of Transportation
Project Manager
(703) 383-2175

